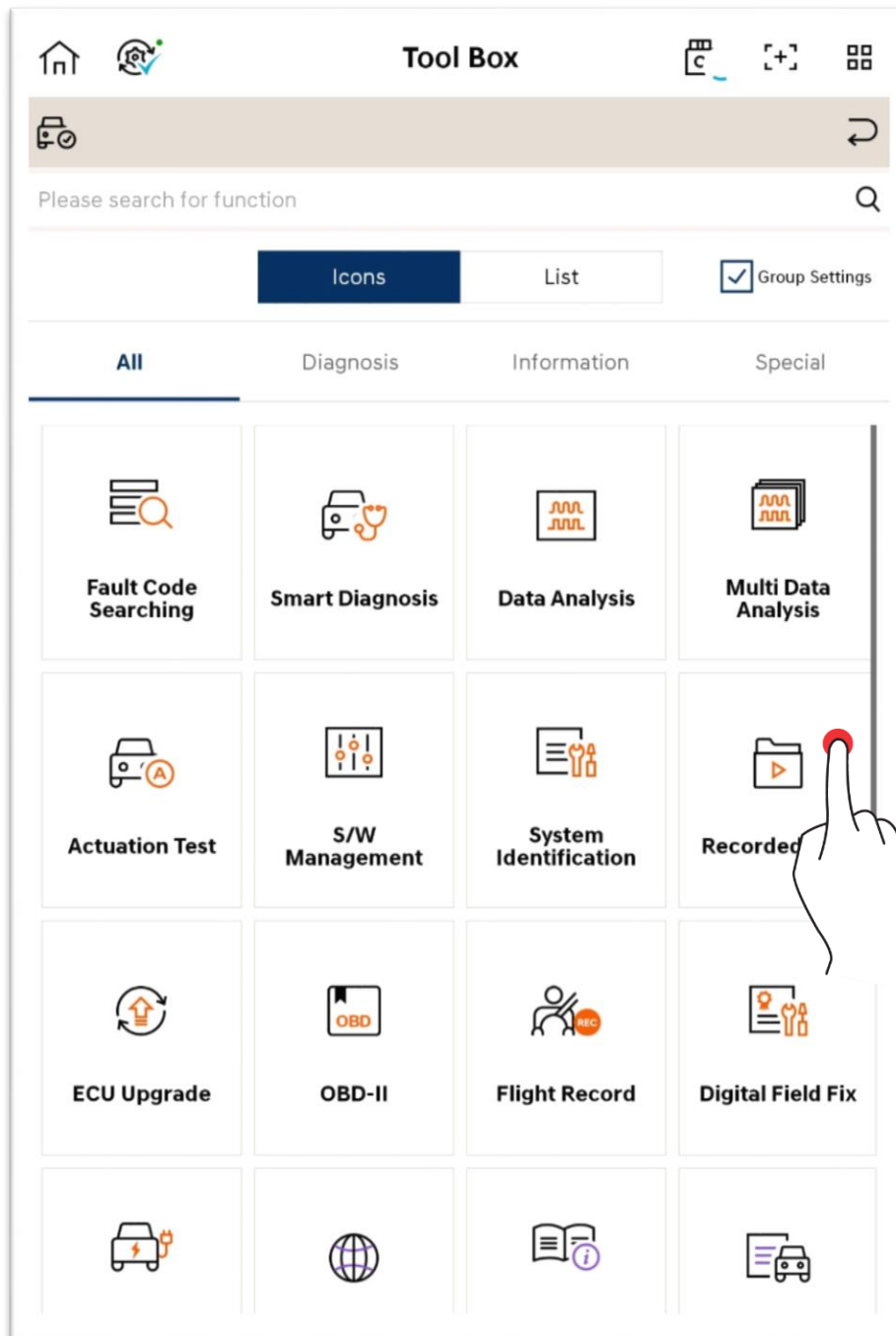


Tool Box – Recorded Data

You can view the data saved in tablet PC, and also copy the driving data saved in VCI II.



Basic Operation

The user can view, share or delete the data saved in tablet PC based on the user's need.

The screenshot shows a tablet application interface titled "Recorded Data". At the top, there are navigation icons: a back arrow, a share icon, and a refresh icon. Below the title bar, there are two tabs: "Local" and "Data Copy". A breadcrumb path is displayed: "NvciData > Record > HYUNDAI > ELANTRA(AD) > 12345789012345678".

Below the breadcrumb, there is a "Recorded Data List" header with a left arrow icon and a checkmark icon. The list is organized into a table with two columns: "Record" and "File Name".

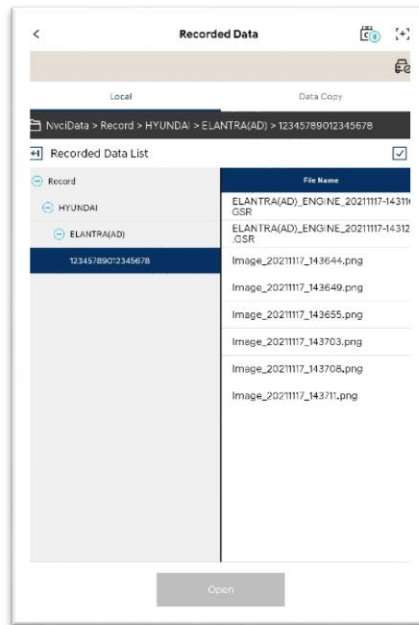
Record	File Name
Record	
HYUNDAI	ELANTRA(AD)_ENGINE_20211117-143116.GSR
ELANTRA(AD)	ELANTRA(AD)_ENGINE_20211117-143123.GSR
12345789012345678	Image_20211117_143644.png
	Image_20211117_143649.png
	Image_20211117_143655.png
	Image_20211117_143703.png
	Image_20211117_143708.png
	Image_20211117_143711.png

At the bottom of the screen, there is an "Open" button. Annotations with blue lines point to specific elements: "Spread/fol" points to the left arrow icon in the "Recorded Data List" header; "Share/delete" points to the checkmark icon in the same header; and "Open a saved data" points to the "Open" button.

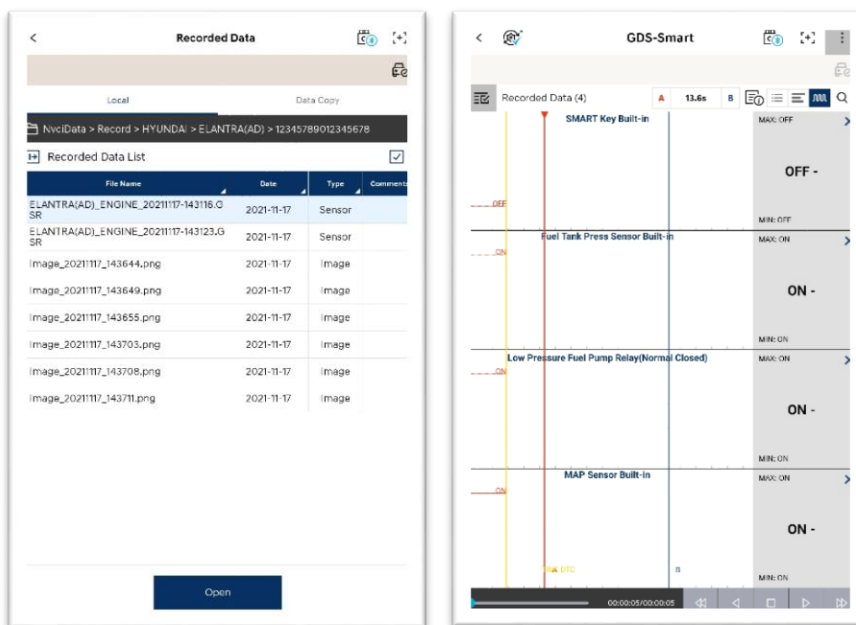
Open Files

Saved Data File (.GSR)

You can check the data in Text Mode and Graph Mode.



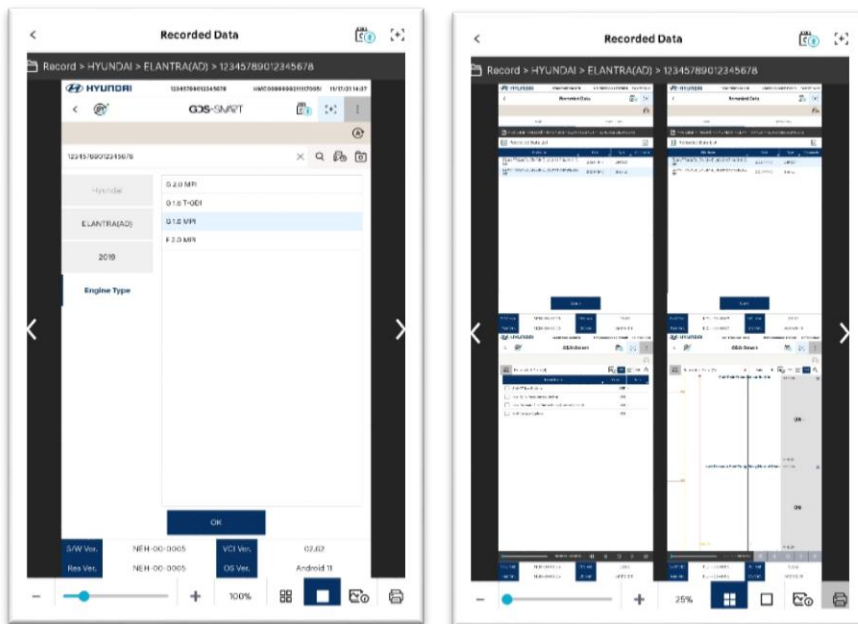
<Text Mode>



<Graph Mode>

Image Files

You can check the image files that are saved.

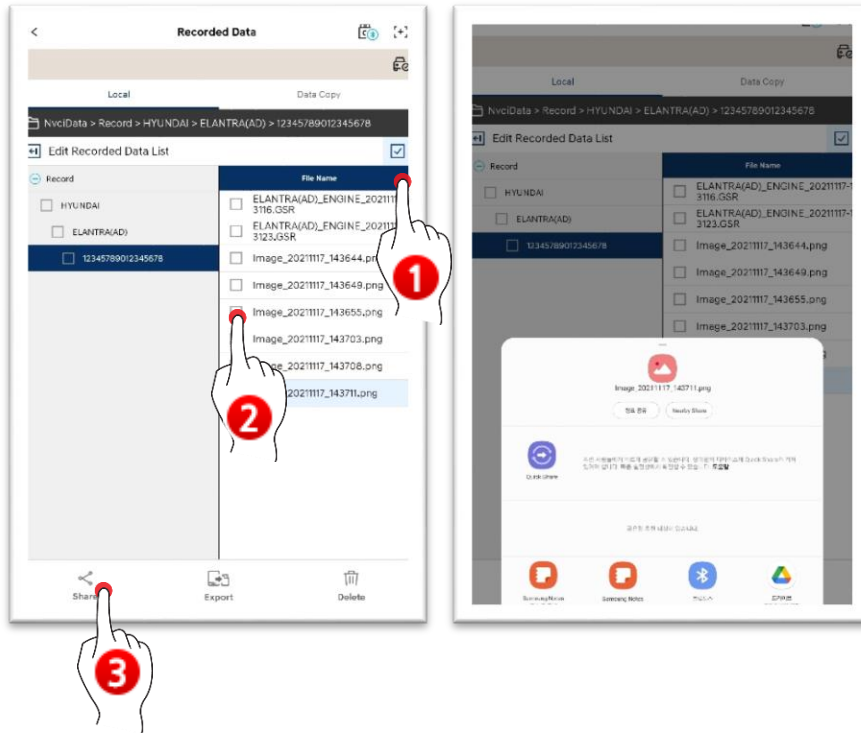


	Maximize/minimize
	View one image page
	View multiple image pages (maximum of 4 pages)
	Detailed information of images
	Print

Sharing, Export and Delete

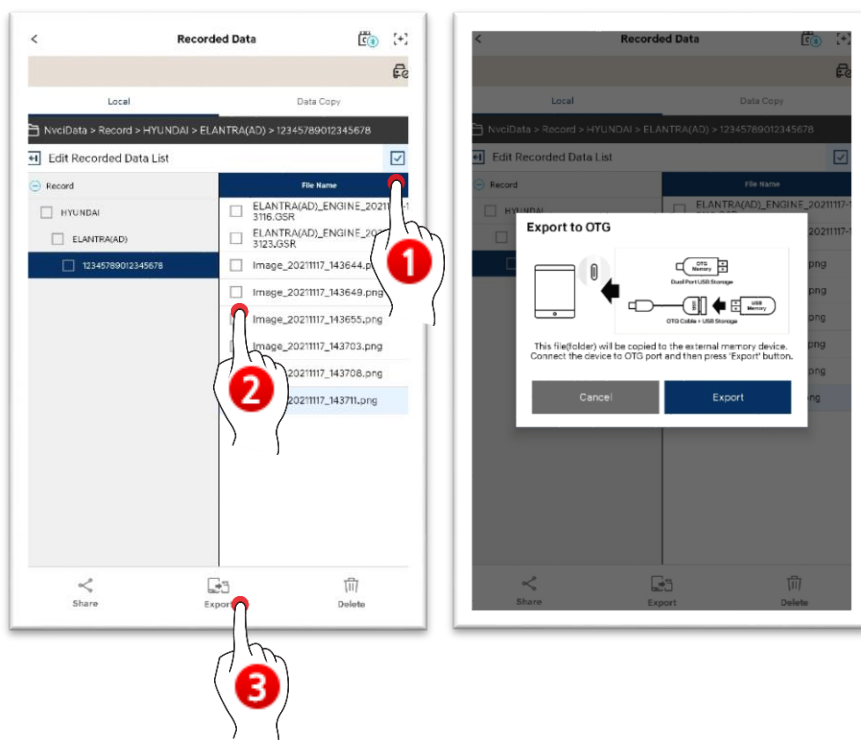
Sharing

You can share the data by using various methods supported by your tablet.



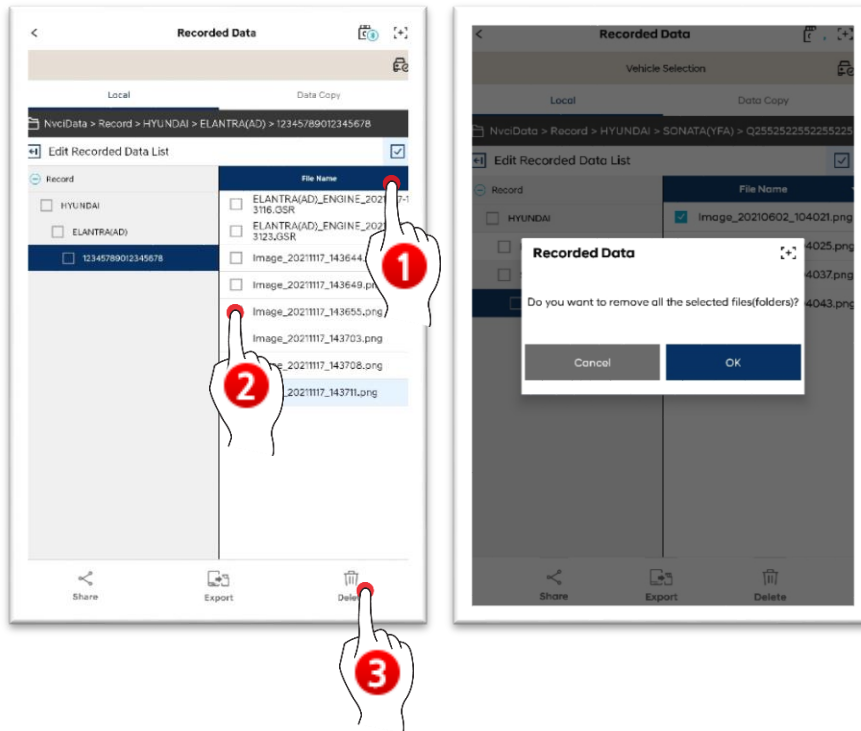
Export

You can export the data through an external saving device.



Delete

You can delete the data via Delete button.



Data Copy

You can copy and paste the data files saved in VCI to your tablet PC.

Select a data to copy, and touch 'Data Copy' button.

※ It is saved in the file path of NvciData/Record of internal storage device.

