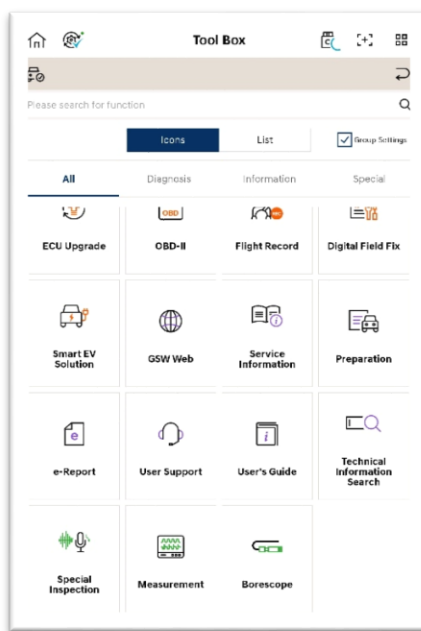


## Tool Box

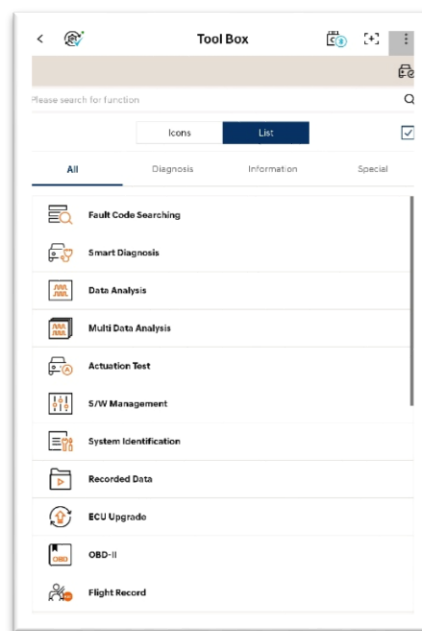
In Expert's Diagnosis, the user can use diagnosis function, special function and utility function provided by GDS-Smart.

## Screen Introduction

Functions provided by GDS-Smart are offered as icons or list, and it provides list of function for each category.



<Icons>

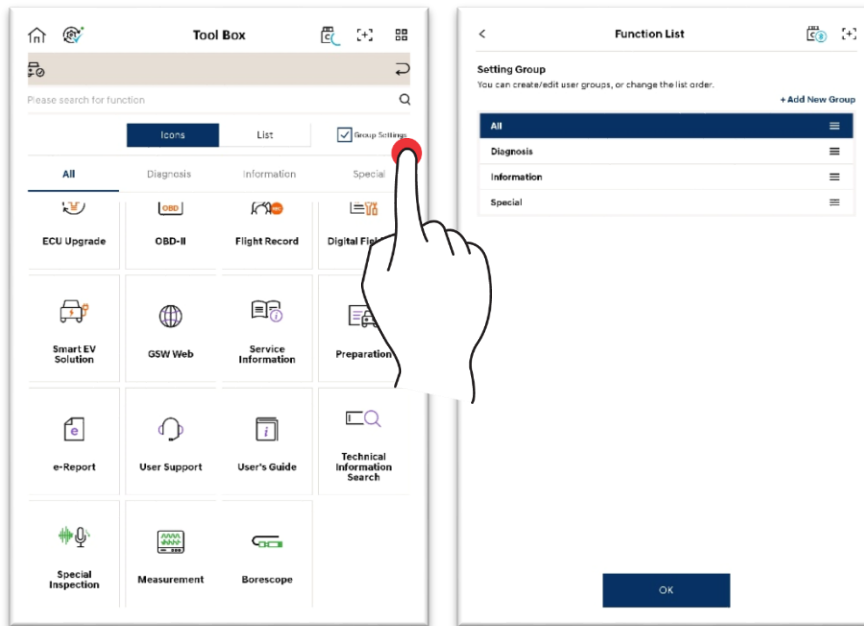


<List>

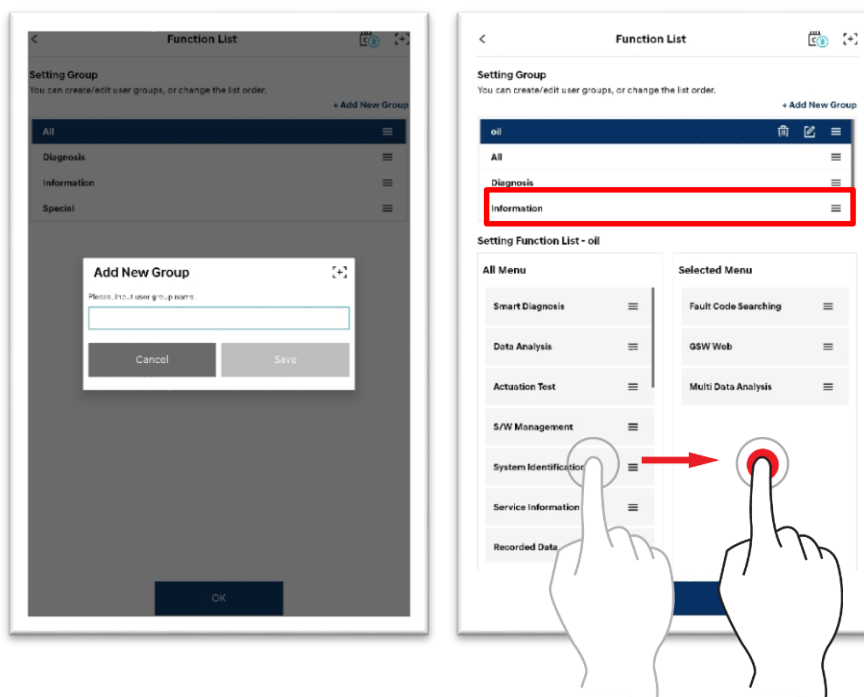
# User Group Creation/Edit

This function edits Menu screen to suit with the user convenience.

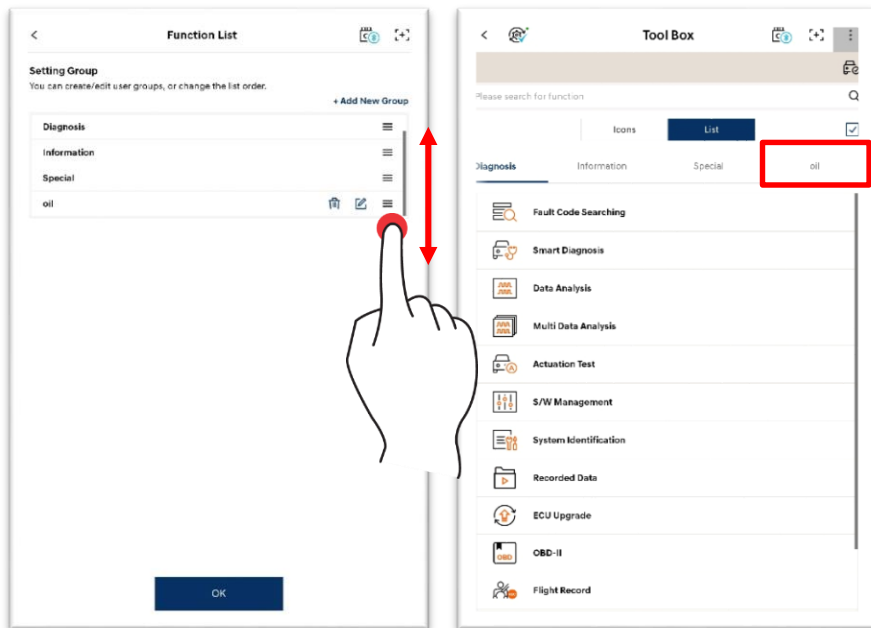
1. Touch  button, and touch 'Add New Group' button.






2. If you enter a group name and touch Save button, a new group is added. You can drag a desired menu to apply it to a group.



3. You can edit the order by dragging  icon. If you touch OK button, you can check the created group.



|   |   |                                 |
|---|---|---------------------------------|
|  |  | You can delete a created group. |
|   |  | You can edit a group name.      |