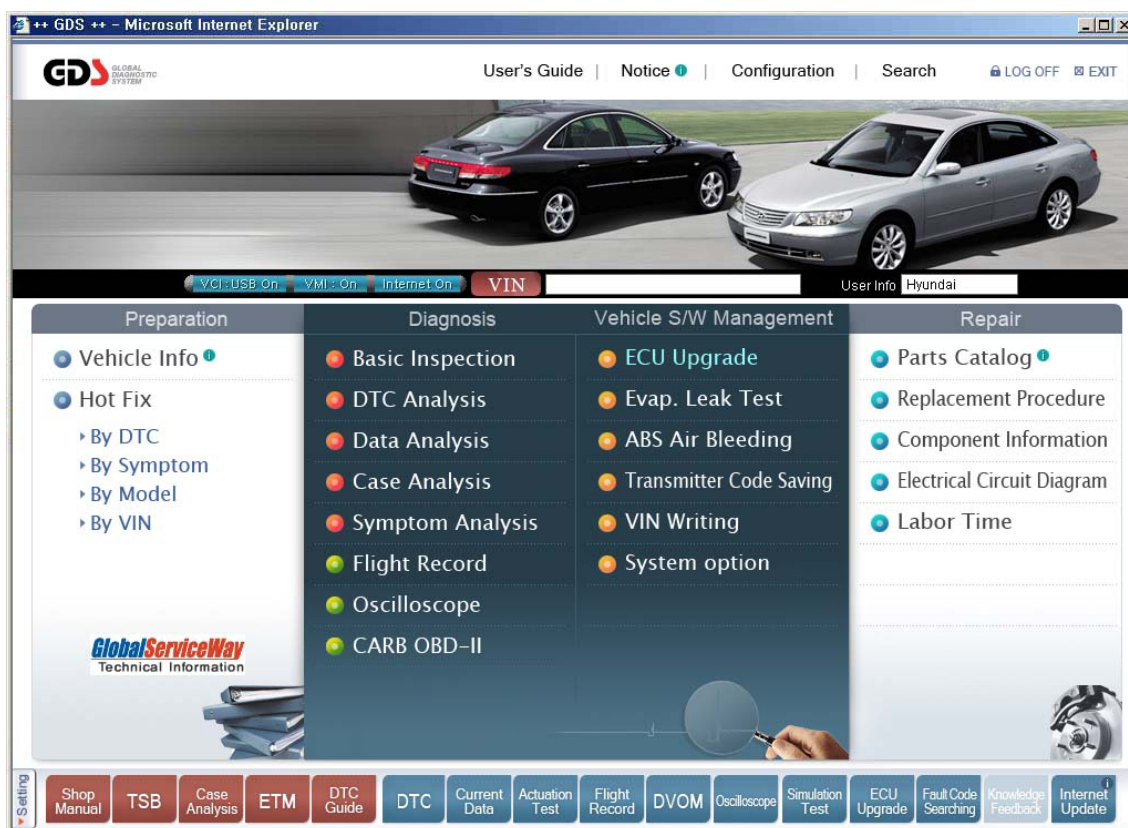


Overview

Ver. 07. 06. 2006





Read me first



Overview

Module: A-00-001 (p.01)

Introduction

Thank you for purchasing the Global Diagnostic System (GDS). Read the instructions thoroughly for proper operation of your Global Diagnostic System

Copyright

This Manual is copyrighted by Global Information Technology Co., Ltd. All rights reserved. No part of this manual may be reproduced in any form without the prior written permission of Global Information Technology Co., Ltd.

No patent liability is assumed with respect to the use of the information contained herein.

©2005 Global Information Technology Co., Ltd. All Right Reserved.

Disclaimer

Global Diagnostic System specifications and manual are subject to change without notice. Global Information technology Co., Ltd. assumes no liability for damage incurred directly or indirectly from error, omission or discrepancies between the computer, VCI, VMI and the User Manual.



Introduction to GDS



Overview

Module: A-00-002 (p.01)

New Standard of Vehicle Diagnosis

“New Standard of Vehicle Diagnosis” is a motto of GDS. The GDS combines vehicle ECU access and essential diagnostic resources in a centralized, easily accessible format.

Composition of GDS

The GDS is composed of the VCI, VMI, GDS Information Terminal (Computer) and Global Service Way (Web Site).

- VCI: Module for vehicle Electronic Control Unit (ECU) communication.
- VMI: Module for performing measurements (DVOM, Oscilloscope, etc.).
- Information Terminal: Computer which displays gathered information from the VCI and VMI, along with vehicle diagnostic and repair information.
- Global Service Way: Internet based vehicle service information.

GDS Distinctive Features

GDS has some of the following distinctive features.

- Coupling information and diagnosis: GDS Information Terminal is a computerized system. It is possible to store large amounts of information. In addition, it can show the diagnosis results and related information on one screen, in contrast to existing scanners limitations in output due to their limited screen size.
- This feature saves time and increases diagnostic effectiveness.
- Quick Support through internet updates: If new data is introduced or if an error has generated in the GDS System, data update or system fix can be made through a real time Internet update.
- ECU reprogramming support: reprogramming step-up transformer, unlimited reprogramming events.
- Support for powerful flight recording functions.
- Wireless network support between VCI and Information Terminal: Reduces need for cable connections between vehicle and Information Terminal.



Safety Warnings and Cautions before Use



Overview

Module: A-00-003 (p.01)

This section contains WARNINGS and CAUTIONS for safe usage of GDS. Before use, the user should read the following information.



WARNING

This indicates incorrect handling may result in a major accident involving death or serious injury.

- The VCI should be secured in a safe location when operating the vehicle to avoid interference with other vehicle equipment.
- Only use the specified adapters and cables when connecting the VCI module. (7~35VDC)
- Ensure all cables are properly connected during operation. Do not disconnect communication cable or power cables unless finished with the equipment.
- When using the trigger module, ensure that the module is installed in a safe and secure location to avoid interference with other vehicle equipment.
- Do not disassemble the VCI module.
- Use only genuine accessory parts supplied by GIT.
- Never connect the device to equipment rather than vehicles.
- Products are to be stored within the right temperatures. (Refer to CAUTION)

- Use GIT products for only its fundamental use.
- This product is designed for technicians with proficient skills therefore all users must digest manuals fully before using the product.
- Users have their own responsibility for Product damages, fire hazards and emitted gas caused by users with no full understanding of the Cautions and other information stated in the manual.
- GIT products should never be tested or repaired by any one rather those authorized service technicians by GIT.
- We GIT are not responsible for products other than products produced by GIT.



CAUTION

This indicates incorrect handling may lead to injury or damage to property. Under certain conditions more serious consequences may result.

- Do not remove the rubber shield from the VCI. Keep liquids and other contaminants away from the VCI.
- Do not drop the VCI.
- Do not place any objects (tools, manuals, etc.) on the VCI.
- Observe correct polarity when connecting the battery supply extension cable.
- When connecting cables under the hood, secure the cables to avoid damage caused by hot or moving parts.

- Unplugging the DLC and USB cables from the VCI module must only be done after releasing the cable connector lock tab(s).
- USB cable must be connected to VCI module in order to upgrade any vehicle ECU or VCI firmware.
- Properly store all components when not in use.
- Do not use cables as carrying handles.
- Do not store products in places where;
 - Extremely high or low temperature (Refer to feature of products)
 - Extremely high or low humidity (Refer to feature of products)
 - Inside a vehicle during summer season for a long time
 - Exposed to direct rays
- Avoid a shock or vibrations or under heavy weight.
- Avoid a shock or vibrations during shifting.
- Keep products away and store from moisture.
- GIT is not responsible for those causes that are generated by PCs, which are not recommended by GIT.
- Keep products away from flammable substances or places where fierce static electricity can occur.
- Products and accessories are not to be coated or painted with chemical substances or acid that can corrode the equipment.
- Do not expose the equipment to X-ray or Microwave. This might cause severe damage to the equipment.



Disposal of Old Electrical and Electronic Equipment



Overview

Module: A-00-004 (p.01)

WEEE (Waste Electrical and Electronic Equipment) symbol shown in [Figure 1] is indicated on the back of the VCI main module, VMI main module, and Trigger module.

Please follow the regulation guide for disposal of Waste Electrical and Electronic Equipment. Use caution disposing of the Trigger module; it contains a lithium battery. Users must follow the regulations when replacing or discarding this battery.



Fig. 1. WEEE Symbol

Disposal of Old Electrical & Electronic Equipment (Applicable in the European Union and other European countries with separate collection systems)

This symbol on the product or on its packaging indicates that this product shall not be treated as household waste. Instead it shall be handed over to the applicable collection point for the recycling of electrical and electronic equipment. By ensuring this product is disposed of correctly, you will help prevent potential negative consequences for the environment and human health, which could otherwise be caused by inappropriate waste handling of this product. The recycling of materials will help to conserve natural resources. For more detailed information about recycling of this product, please contact your local city office, your household waste disposal service or the shop where you purchased the product.