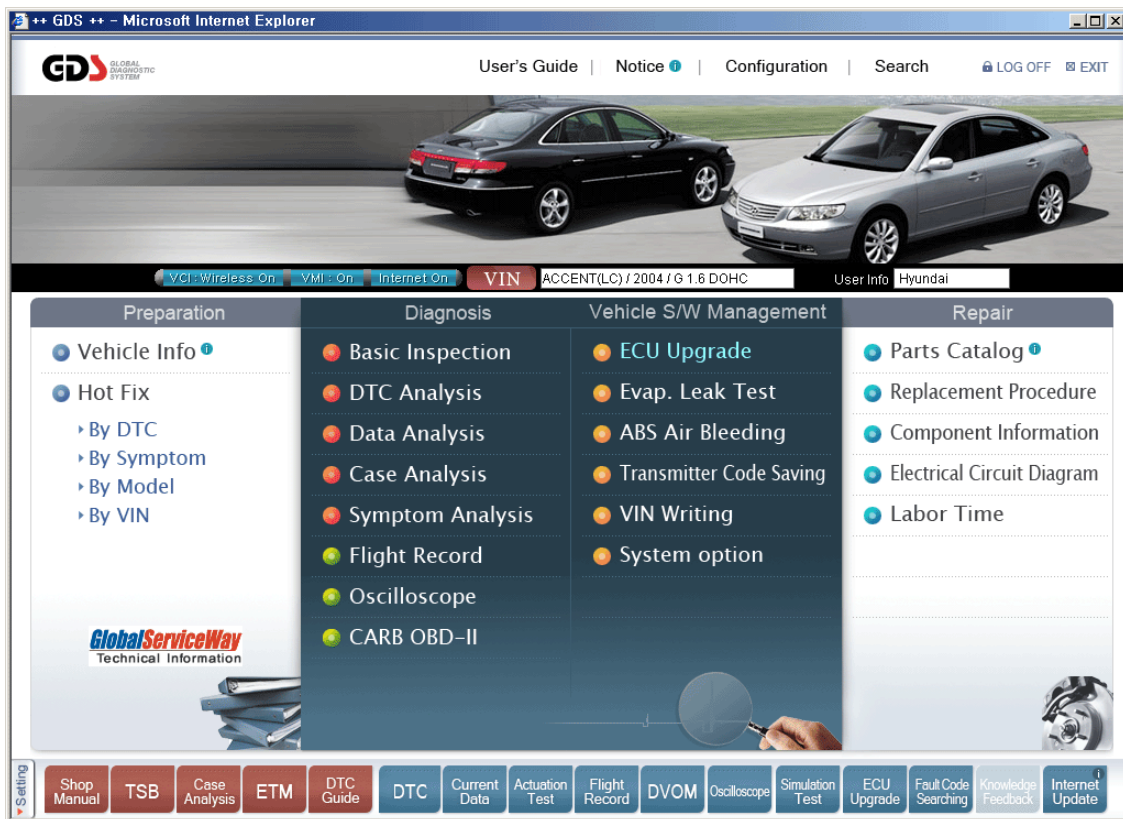


GDS - Repair

Ver. 07. 06. 2006



++ GDS ++ - Microsoft Internet Explorer

GDS GLOBAL DIAGNOSTIC SYSTEM

User's Guide | Notice | Configuration | Search | LOG OFF | EXIT

VCI: Wireless On | VMI: On | Internet On | VIN: ACCENT(LC)/2004 / G 1.6 DOHC | User Info: Hyundai

Preparation	Diagnosis	Vehicle S/W Management	Repair
<ul style="list-style-type: none"> Vehicle Info Hot Fix <ul style="list-style-type: none"> By DTC By Symptom By Model By VIN 	<ul style="list-style-type: none"> Basic Inspection DTC Analysis Data Analysis Case Analysis Symptom Analysis Flight Record Oscilloscope CARB OBD-II 	<ul style="list-style-type: none"> ECU Upgrade Evap. Leak Test ABS Air Bleeding Transmitter Code Saving VIN Writing System option 	<ul style="list-style-type: none"> Parts Catalog Replacement Procedure Component Information Electrical Circuit Diagram Labor Time

GlobalServiceWay Technical Information

Setting | Shop Manual | TSB | Case Analysis | ETM | DTC Guide | DTC | Current Data | Actuation Test | Flight Record | DVOM | Oscilloscope | Simulation Test | ECU Upgrade | Fault Code Searching | Knowledge Feedback | Internet Update



Parts Catalog



GDS - Repair

Module: A-06-001 (p.01)

The "Parts Catalog" function is an Internet-based parts catalog that uses the VIN to provide access to the correct parts and option data for the selected vehicle.

The Web Parts Catalog (WPC) has its own user guide, located at the upper right-hand section of the page.

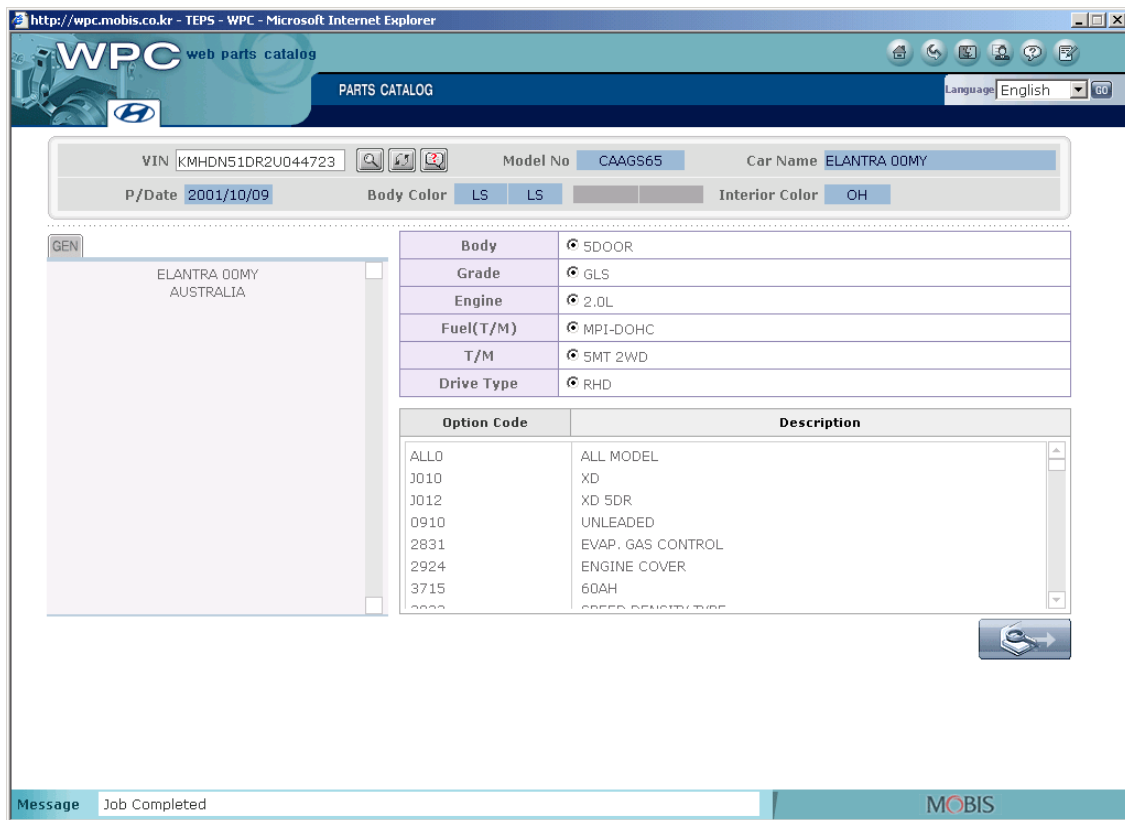


Figure 1. Parts Catalog

The "Replacement Procedure" function provides data related to component/assembly removal and installation.

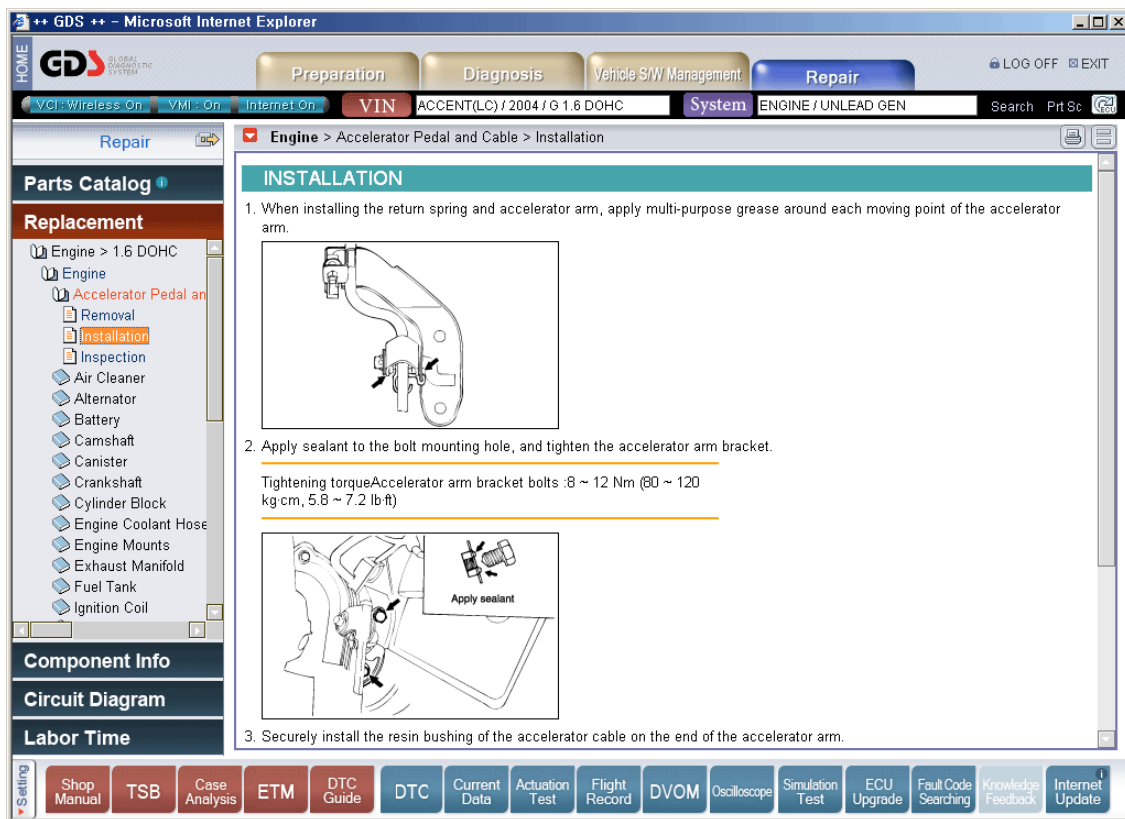


Figure 1. Replacement Procedure

The "Component Information" section provides data (circuit diagrams, removal/installation procedures, DTC information) related to supported components.

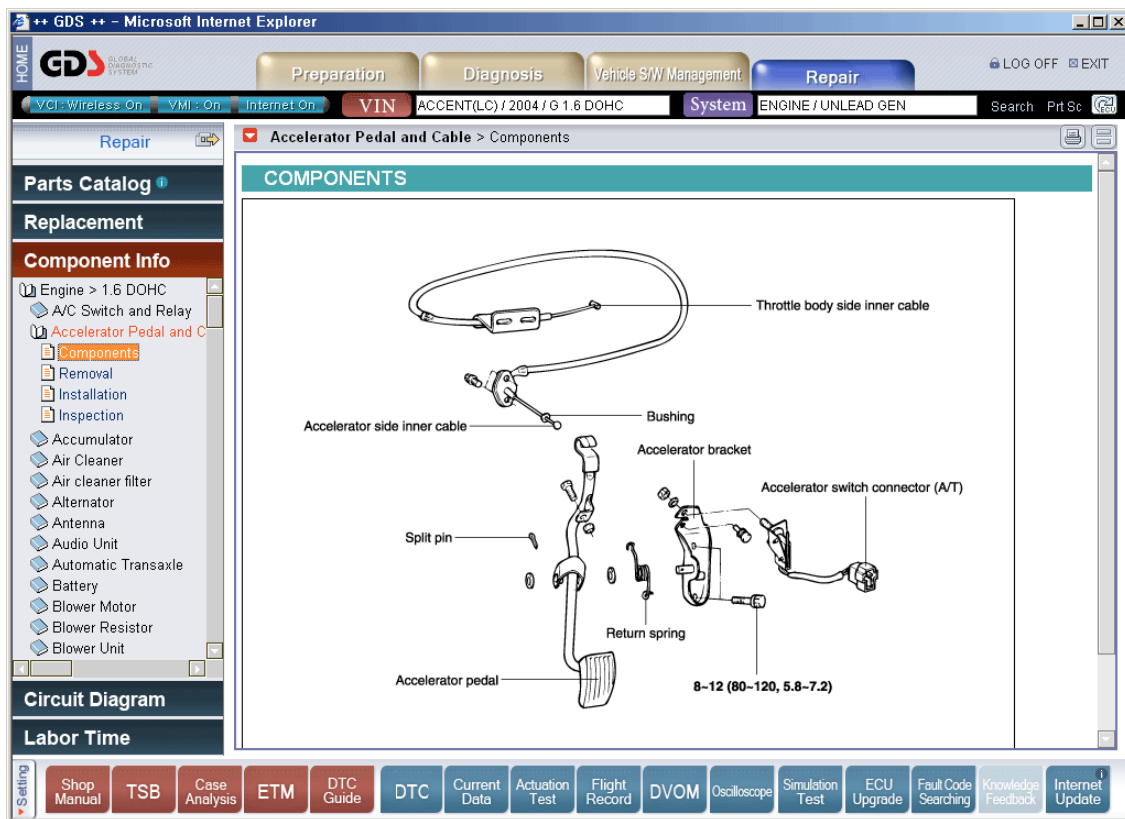


Figure 1. Component Information

The "Circuit Diagram" function provides additional access to the schematics for a supported system.

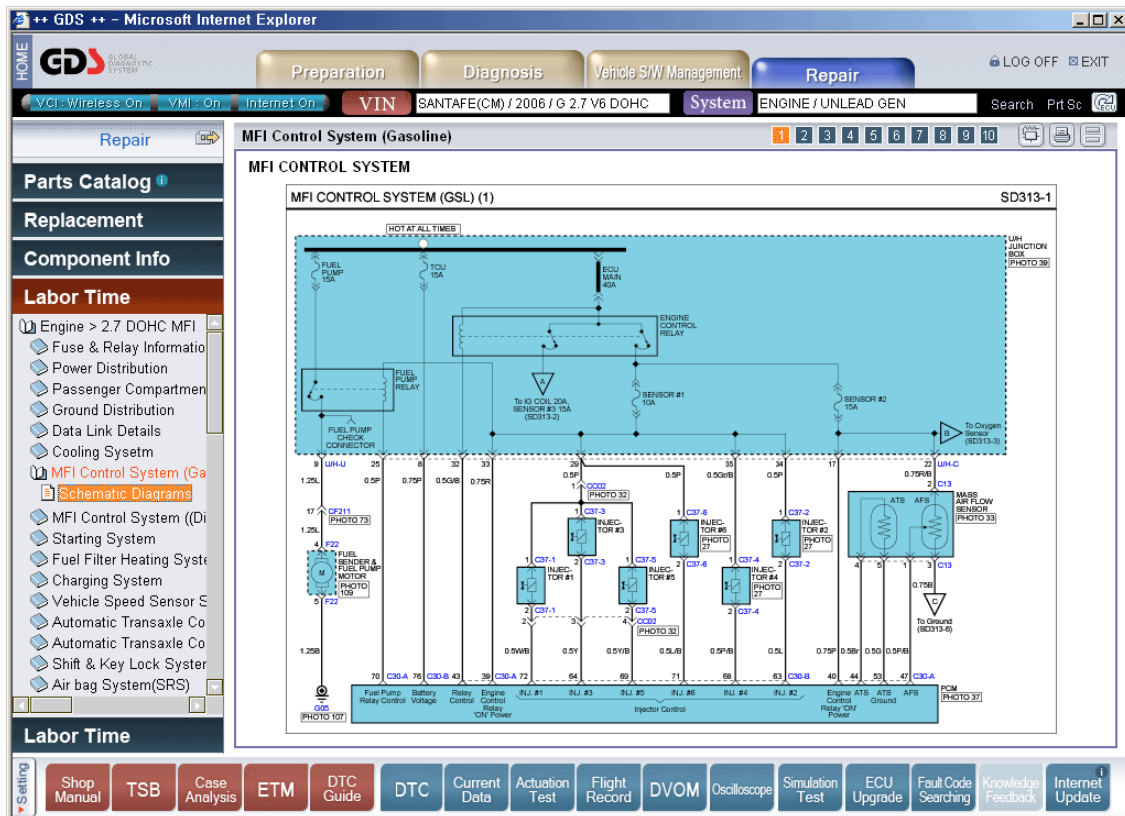


Figure 1. Circuit Diagram



Labor Time



GDS - Repair

Module: A-06-005 (p.01)

The "Labor Time" function provides access to Labor Time Standard (LTS) data for the selected vehicle. Select the Vehicle Type, and Model from the drop-down boxes provided, then click the "GO" button to display vehicle data.

Next, select a Group from the list displayed on the left-hand side of the page. Checking the "OP CODE" box will display a calculation in the "TOTAL M/H" field.

Included operations (if applicable), and Nature/Cause (N/C) data is also available for supported labor operations.

The screenshot shows the GDS web interface in Microsoft Internet Explorer. The 'Repair' tab is active. The vehicle is identified as 'SANTAFE(CM) / 2008 / G 2.7 V6 DOHC'. The 'Labor Time' section is selected in the left-hand menu. The main area displays a list of operations for the '200 ENGINE GROUP'. Below the list, a 'Total M/H' field shows '0'.

OP CODE	DESCRIPTION	OP TIME	INCLUDE	NC CODE
<input type="checkbox"/> 20100H0D	Engine Assy (diesel)	18.1		
<input type="checkbox"/> 20100HA4 : ADD	Auto Transmission	0.5		
<input type="checkbox"/> 20100H11 : COM	Bearing-Clutch Release	0.1		
<input type="checkbox"/> 21101R0D	Engine Assy-Sub (diesel)	9.9		
<input type="checkbox"/> 21101RA4 : ADD	Auto Transmission	0.5		

Figure 1. Labor Time