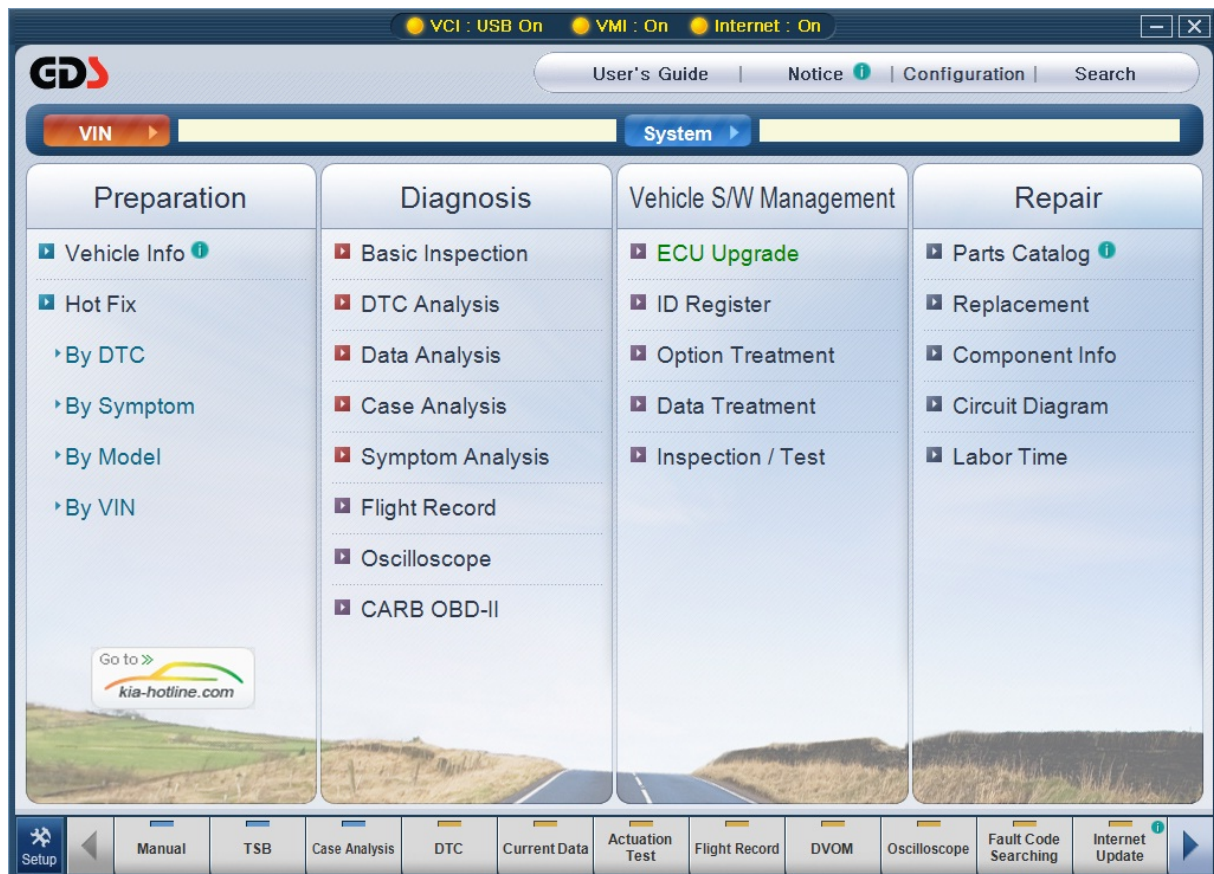


GDS - Preparation

Ver. 04. 06. 2010





Vehicle Info



GDS - Preparation

Module: A-03-001 (p.01)

Specific information of a vehicle can be found in "Vehicle Info", if user has made a VIN input directly in the "Vehicle Selection". "Vehicle Info" and "Warranty History" are the functions that can be found in the "Vehicle Info". PC should be connected to the Internet for these functions.

Vehicle Info

It is a function to check specific product information of the vehicle for the inputted VIN code in the "Vehicle Selection". "Basic information", "PIO specification", and "Detail Vehicle Information" can be checked

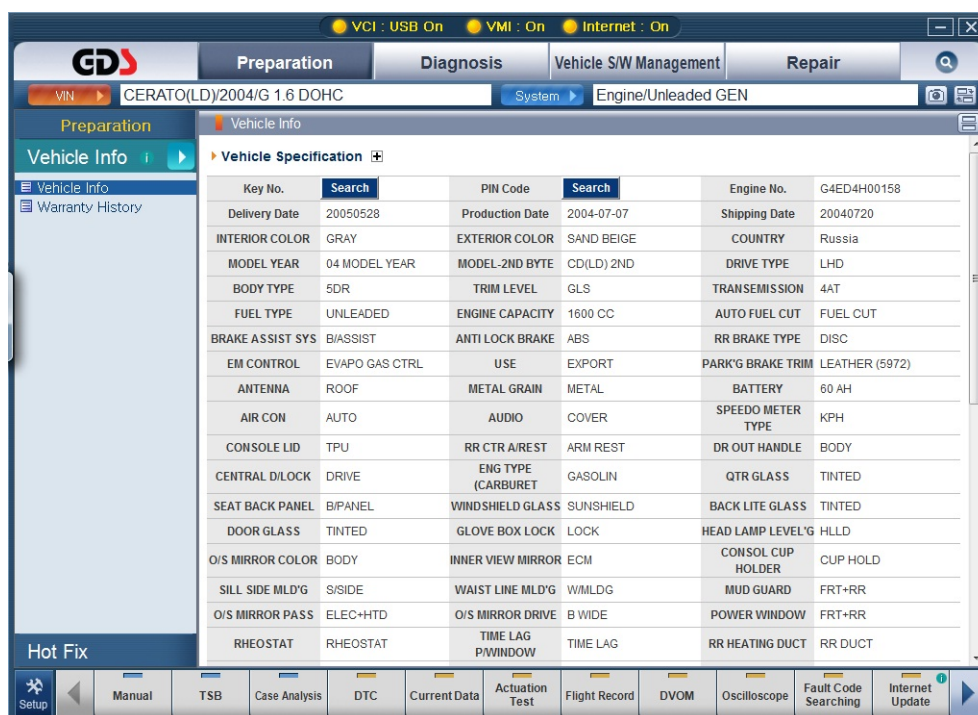


Figure 1. Vehicle Info

Warranty History

Function to check "Warranty History" for the vehicle corresponding to the inputted VIN at the "Vehicle Selection".

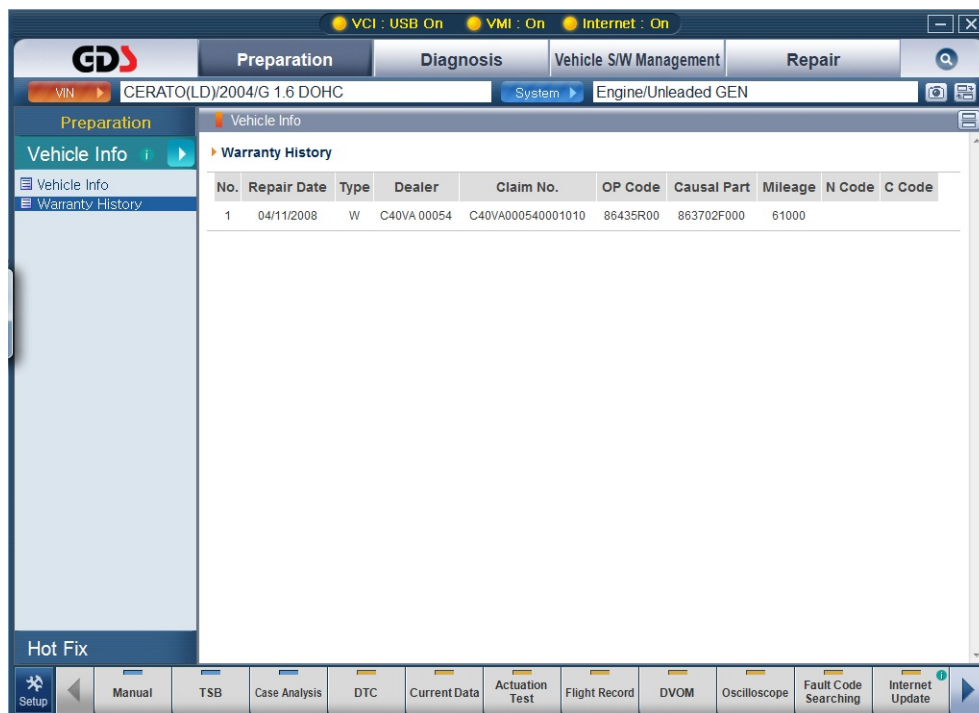


Figure 2. Warranty History



Hot Fix



GDS - Preparation

Module: A-03-002 (p.01)

GDS has a search function for various Bulletins (e.g. "TSB", "Campaign", "Case Study", and etc.). There are 4 standard ways of searching: "DTC", "Symptom", "Model" and "VIN".

By DTC

It is possible to search by DTC after the "Fault Code Searching" function is completed. Bulletins are searched in keywords with no regard to the vehicle. Keywords are the DTC codes found by the "Fault Code Searching" function. The Page shown in [Figure 1] will be displayed when the search is completed.

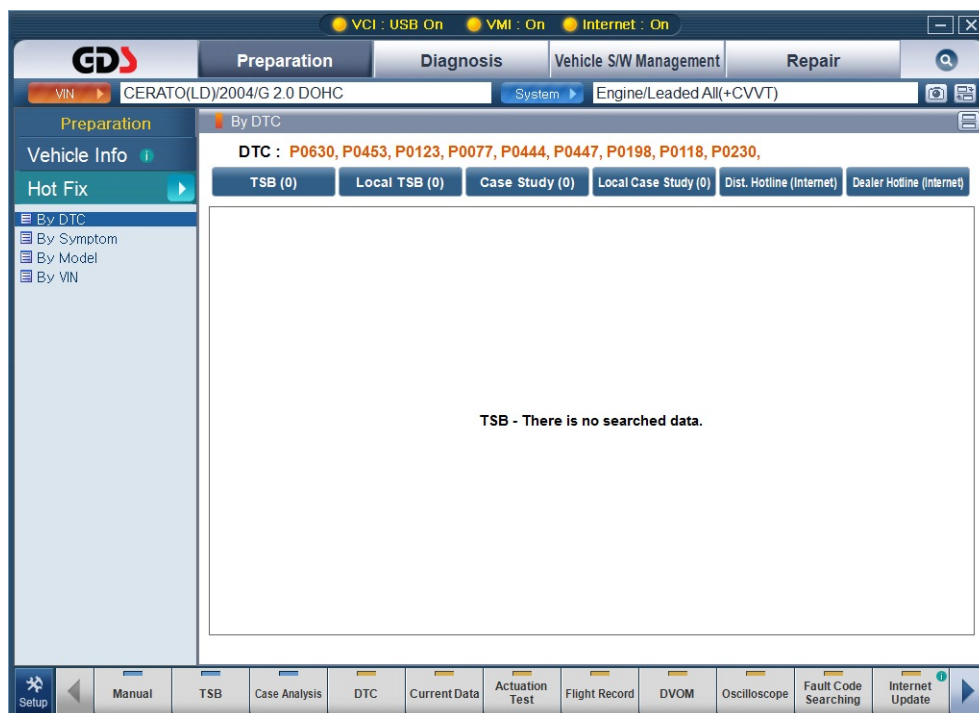


Figure 1. Searched result by DTC

In case of DTC standardized "Bulletins" search, "TSB(Technical Service Bulletin)", "Local TSB", "Case Study", "Local Case Study", "Dist. Hotline(Internet)", and "Dealer Hotline(Internet)" are listed. If there is no DTC found by the "Fault Code Searching" function for the selected vehicle system then there will be no search results as well.

Number of searched results will be shown in each Bulletin if there is a DTC found through the Fault Code Searching. By clicking the icon beside the number of searched result should unfold the lists of searched result. Clicking the icon again will fold back the result list.

By symptom

Search by symptom is possible if a user selected a symptom for a vehicle and system at the "Vehicle Selection". Bulletins are searched by symptom as a keyword. Page shown in [Figure 2] will be displayed when the search is completed.

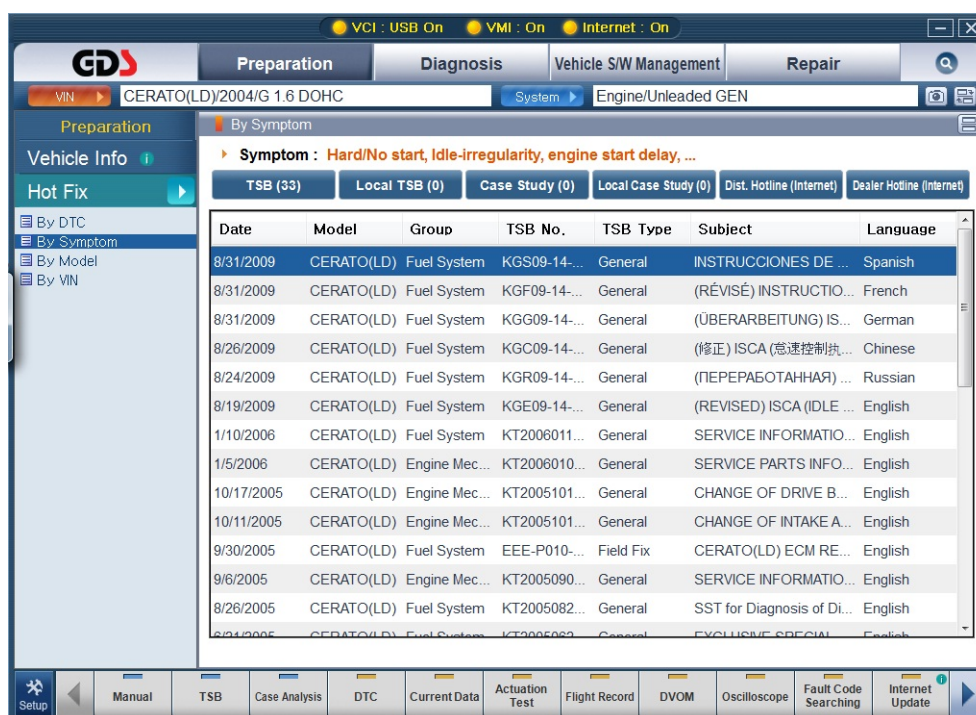


Figure 2. Searched result by Symptom

In case of symptom standardized Bulletin search "TSB(Technical Service Bulletin)", "Local TSB", "Case Study", "Local Case Study", "Dist. Hotline(Internet)", and "Dealer Hotline(Internet)" are listed. If there is no DTC found by the "Fault Code Searching" for the selected vehicle system then there will be no search results as well

Number of searched results will be shown in each Bulletin if the symptom is assigned. By clicking the icon beside the number of searched result should unfold the lists of searched result. Clicking the icon again will fold back the result list.

By model

In case of “Searched by Model”, Bulletins are searched by keywords: the keywords are vehicle and model year. Page shown in [Figure 3] will be displayed when the search is completed.

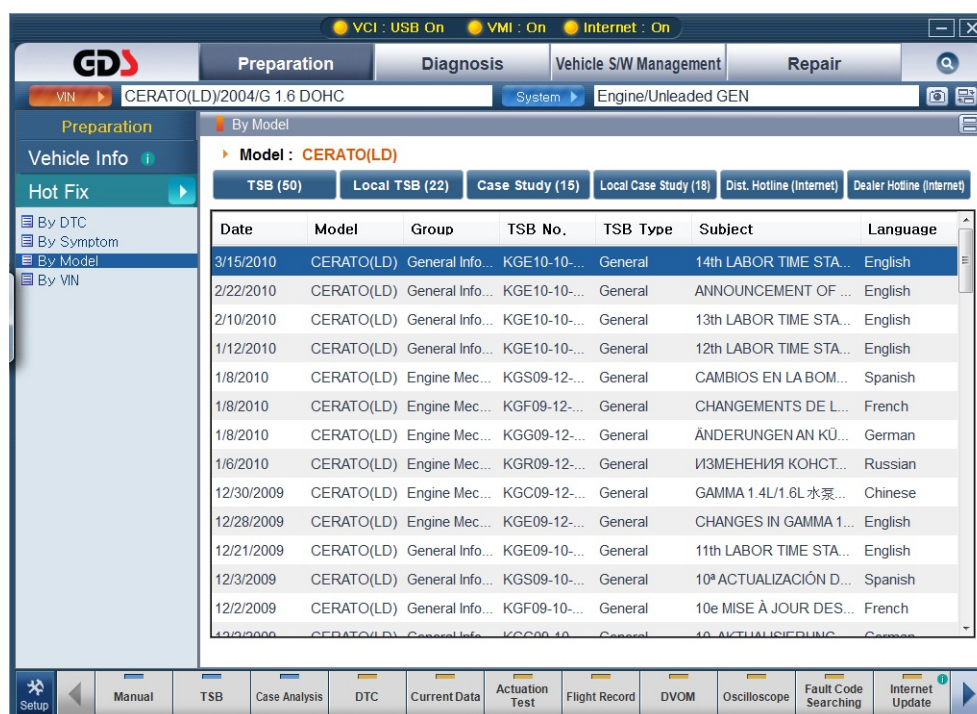


Figure 3. Searched result by Model

In case of “Model” standardized Bulletin search, “TSB(Technical Service Bulletin)”, “Local TSB”, “Case Study”, “Local Case Study”, “Dist. Hotline(Internet)”, and “Dealer Hotline(Internet)” are listed.

Number of searched results will be shown in each Bulletin if the symptom is assigned. By clicking the icon beside the number of searched result should unfold the lists of searched result. Clicking the icon again will fold back the result list.

By VIN

In case of search by VIN, Bulletins are searched by keyword: The keyword is VIN code. Page shown in [Figure 4] will be displayed when the search is completed.

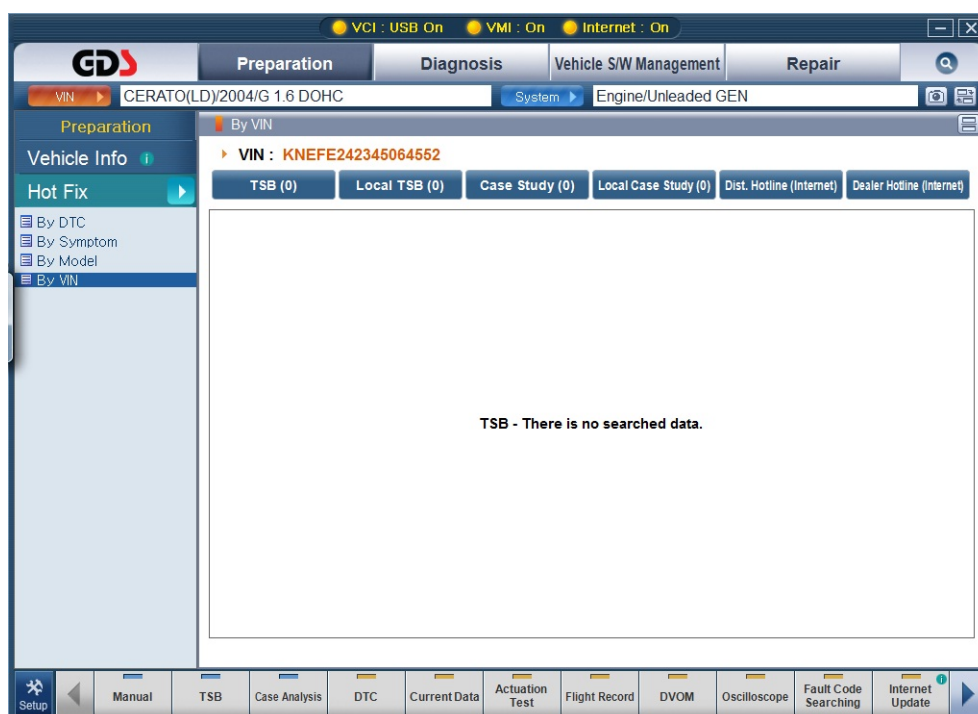


Figure 4. Searched result by VIN

In case of "VIN" standardized Bulletin search, "TSB(Technical Service Bulletin)", "Local TSB", "Case Study", "Local Case Study", "Dist. Hotline(Internet)", and "Dealer Hotline(Internet)" are listed.

Number of searched results will be shown in each Bulletin if the symptom is assigned. By clicking the icon beside the number of searched result should unfold the lists of searched result. Clicking the icon again will fold back the result list.