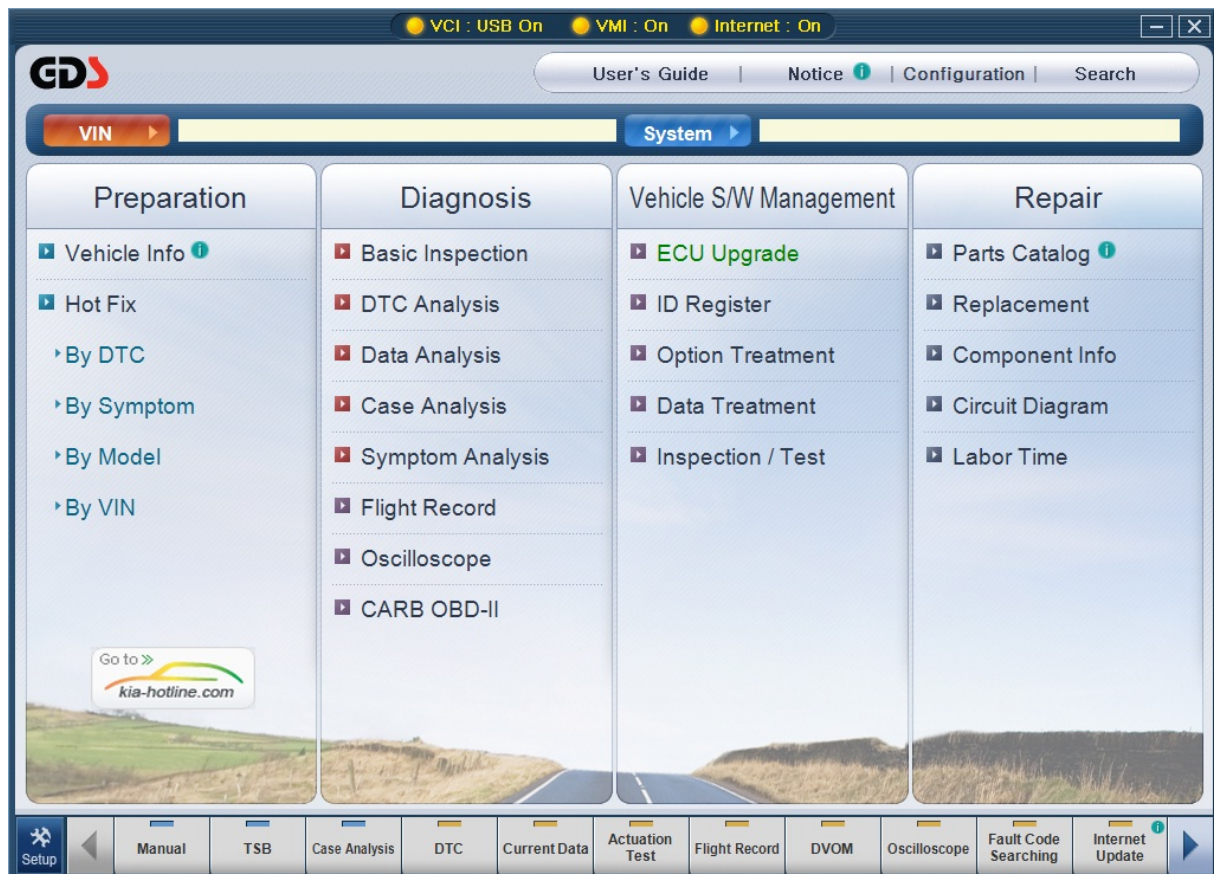


# GDS - Repair

Ver. 04. 06. 2010





## Parts Catalog



GDS - Repair

Module: A-06-001 (p.01)

The "Parts Catalog" function is an Internet-based parts catalog that uses the VIN to provide access to the correct parts and option data for the selected vehicle.

The Web Parts Catalog (WPC) has its own user guide, located at the upper right-hand section of the page.

http://wpc.mobis.co.kr/ - TEPS - WPC - Windows Internet Explorer

web parts catalog  
**WPC**

PARTS CATALOG | PARTS INFORMATION  
Model Selection

Language  
English

VIN Search

VIN U5YFF5228L051548

Model No : BSW5D2615 Car Name : CEED / CROATIA Engine No :  
P/Date : 2008/04/14 Body Color : 9S 9S Interior Color : EQ

Body: WAGON-5DR(5) Engine Capacity: 1.6L-GAMMA Engine: DOHC-MPI  
Fuel: GASOLINE-UNLEADED T/M: 5MT 2WD Drive Type: LHD

MODEL Search

Maker KMC Region EUR Type P/Year ALL

Message Job Completed

Figure 1. Parts Catalog



## Replacement Procedure



GDS - Repair

Module: A-06-002 (p.01)

The "Replacement Procedure" function provides data related to component/assembly removal and installation.

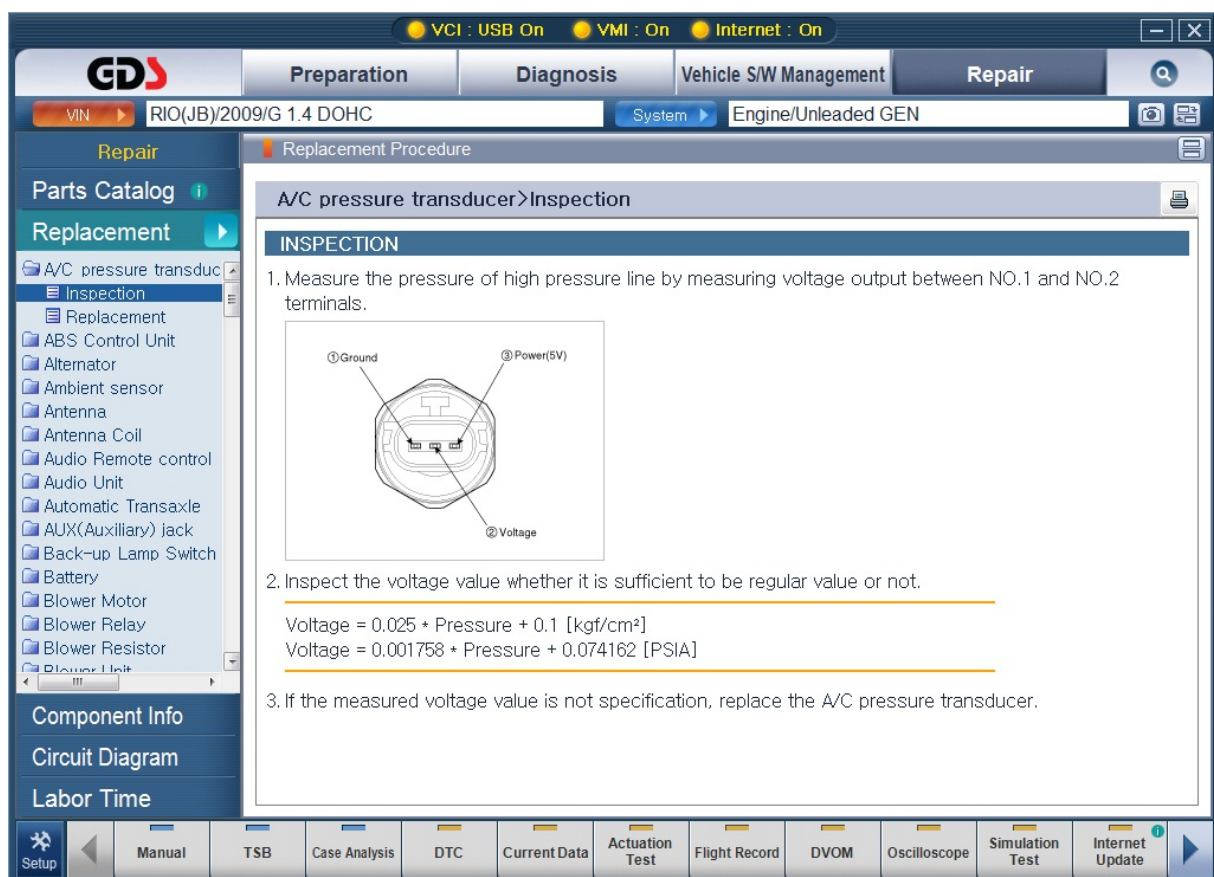


Figure 1. Replacement Procedure



## Component Information



GDS - Repair

Module: A-06-003 (p.01)

The "Component Information" section provides data (circuit diagrams, removal/installation procedures, DTC information) related to supported components.

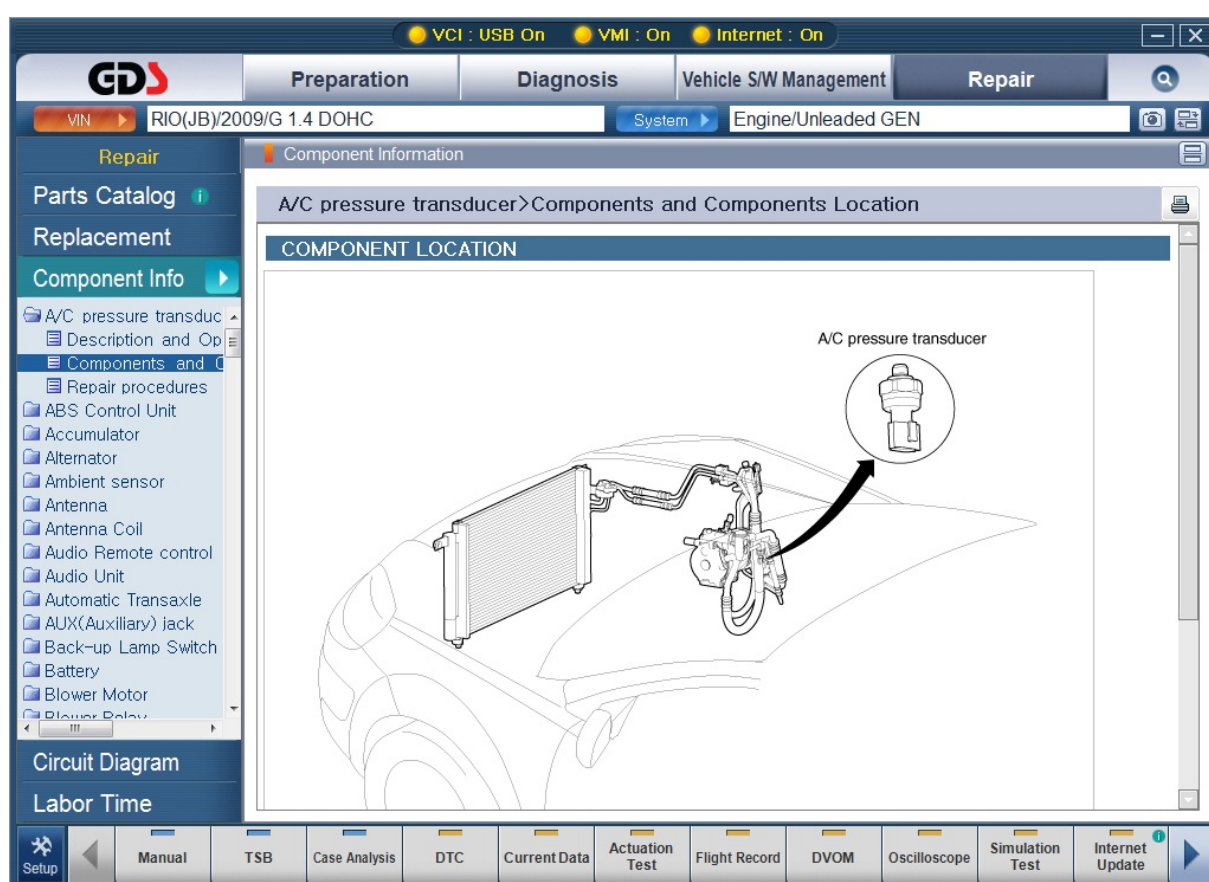


Figure 1. Component Information

The "Circuit Diagram" function provides additional access to the schematics for a supported system.

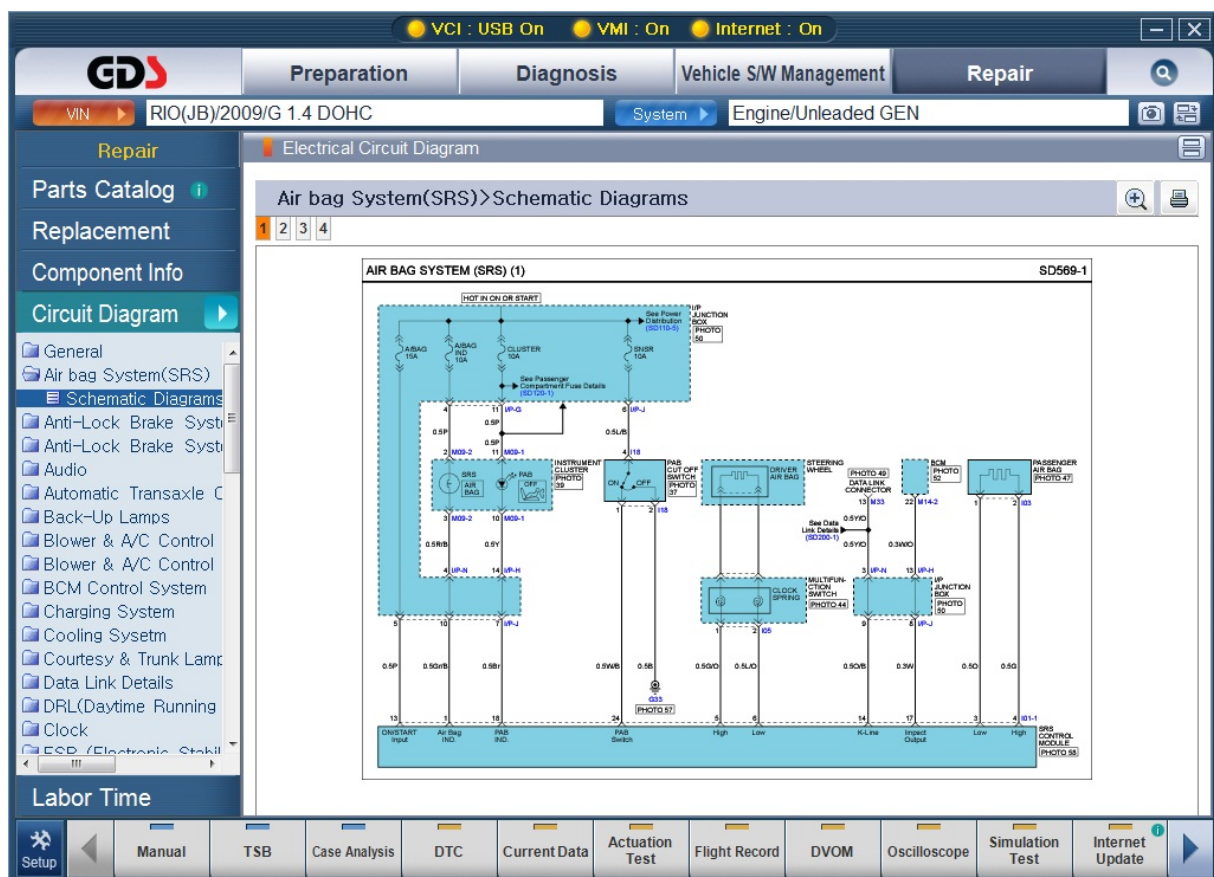


Figure 1. Circuit Diagram





## Labor Time



GDS - Repair

Module: A-06-005 (p.01)

The "Labor Time" function provides access to Labor Time Standard (LTS) data for the selected vehicle. Select the Vehicle Type, and Model from the drop-down boxes provided, then click the "GO" button to display vehicle data.

Next, select a Group from the list displayed on the left-hand side of the page. Checking the "OP CODE" box will display a calculation in the "TOTAL M/H" field.

Included operations (if applicable), and Nature/Cause (N/C) data is also available for supported labor operations.

The screenshot shows the GDS software interface with the 'Repair' tab selected. The 'VIN' field contains 'RIO(JB)/2009/G 1.4 DOHC' and the 'System' dropdown is set to 'Engine/Unleaded GEN'. The 'Labor Time' section is active, displaying a list of vehicle models including 'RIO(05MY~)', 'SEPHIA(-97MY)', 'SEPHIA-II(98MY~)', 'SHUMA(98MY~)', and 'SPA,MEN,SMA,SPT(-II)'. Below the model list are two engine diagrams. A table of operations is shown with columns for 'OP CODE', 'DESCRIPTION', 'OP TIME', 'INCLUDE', and 'NC CODE'. The 'Total M/H' field shows '0' with a 'Reset' button.

OP CODE	DESCRIPTION	OP TIME	INCLUDE	NC CODE
<input type="checkbox"/> 20000A00	Engine Oil, Inspection & Refilling	0.2		NC CODE
<input type="checkbox"/> 20100H00	Engine Assy, OH	15.8	INCLUDE	NC CODE
<input type="checkbox"/> 20100H00	Engine Assy (Diesel), OH	20.4	INCLUDE	NC CODE
<input type="checkbox"/> 20100HA0 : ADD	Auto Transmission	0.2		NC CODE
<input type="checkbox"/> 20100HB0 : ADD	Air Conditioning	0.2		NC CODE
<input type="checkbox"/> 20100HF0 : COM	Clutch Release Bearing	0.1		NC CODE
<input type="checkbox"/> 20100HY0	Actual Time-if used	99.9		NC CODE

Figure 1. Labor Time