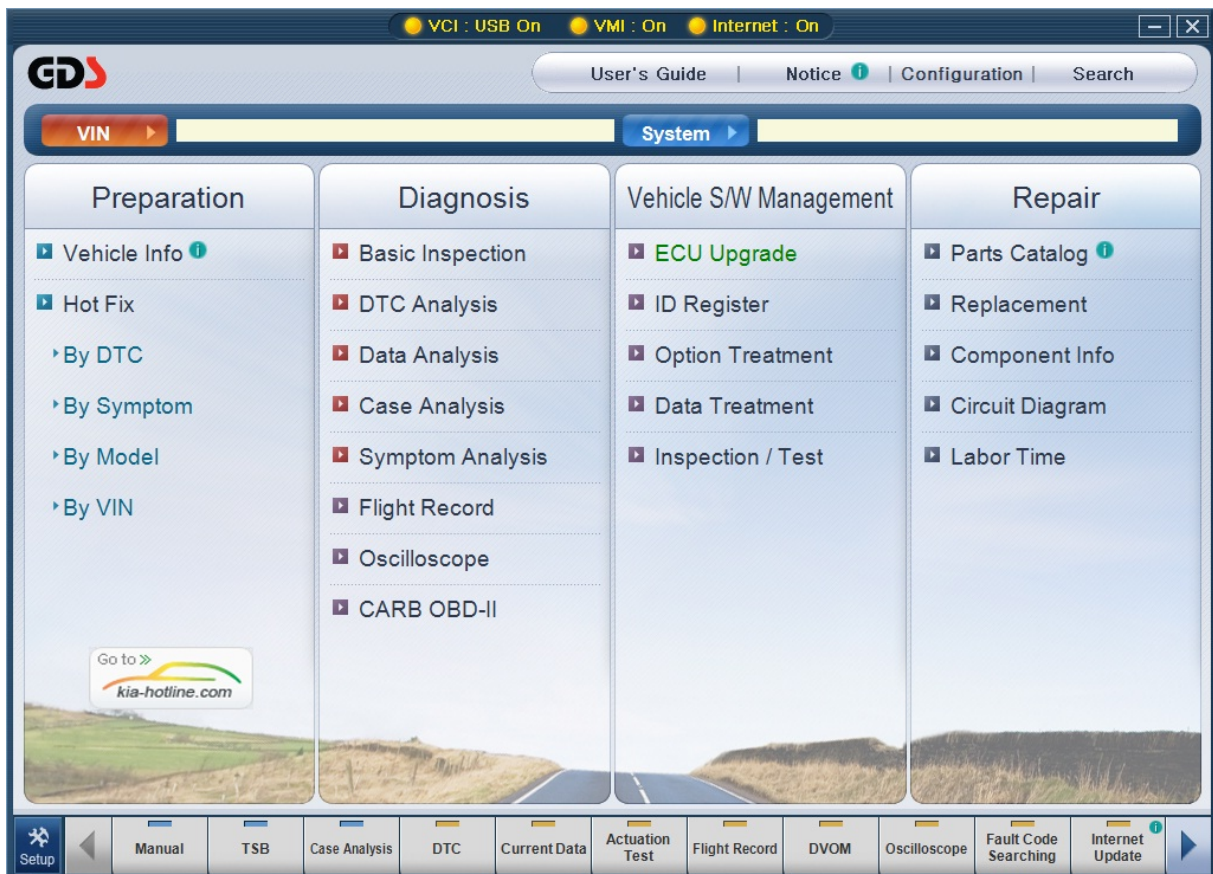


Appendix

Ver. 04. 06. 2010



It is possible to run Wireless LAN Setting function by running the program on the Desktop Tray as shown in Figure 1.



Figure 1. Shortcut Icon for Wireless LAN Setting

By this function, the user can check the wireless communication status between Information terminal and VCI.

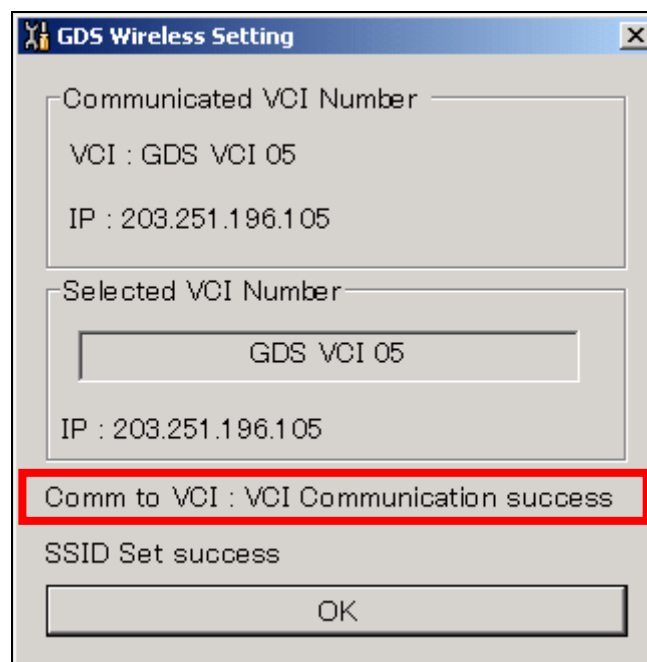


Figure 2. GDS Wireless Setting

To calibrate the touch screen, double-click the "Mouse Properties" icon as shown.



Figure 1. Shortcut Icon for Calibration

Select "TouchScreen" tab and press the "Calibration" button as shown in Figure 2 to move to the Calibration screen.

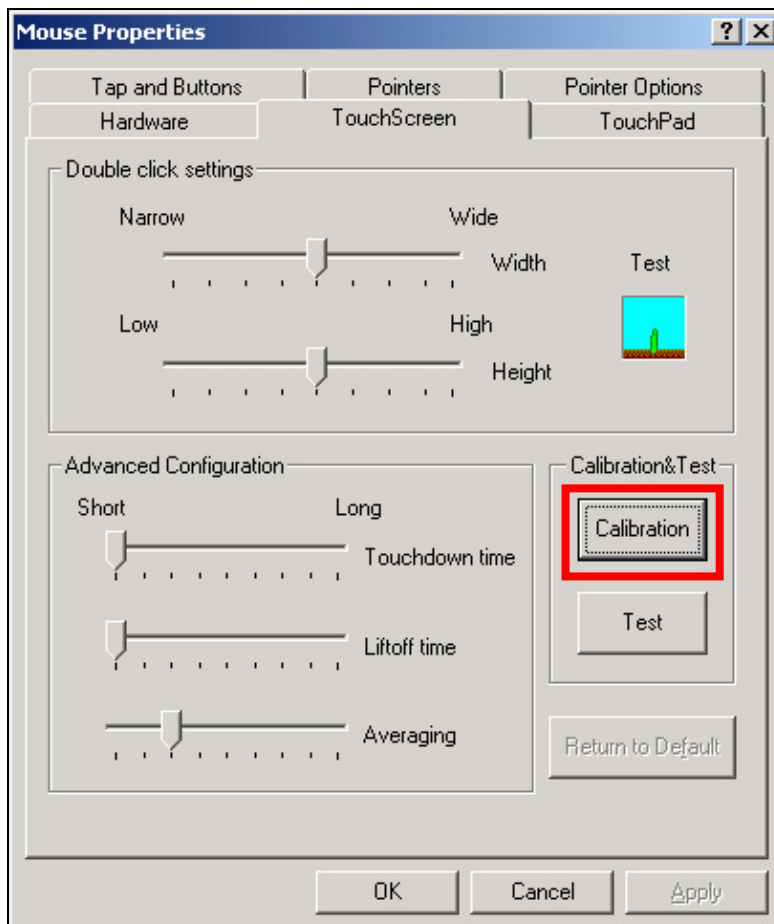


Figure 2. Selecting the Calibration



Figure 3. Calibration Screen

At the Calibration screen, press the red cross in the touch screen with a stylus pen. Press “Enter” to go back to the ‘Mouse Properties’ window after repeating the process with 9 red crosses in each corner. Configuration will be saved after pressing “OK” button in the bottom of the window as shown in the figure below.

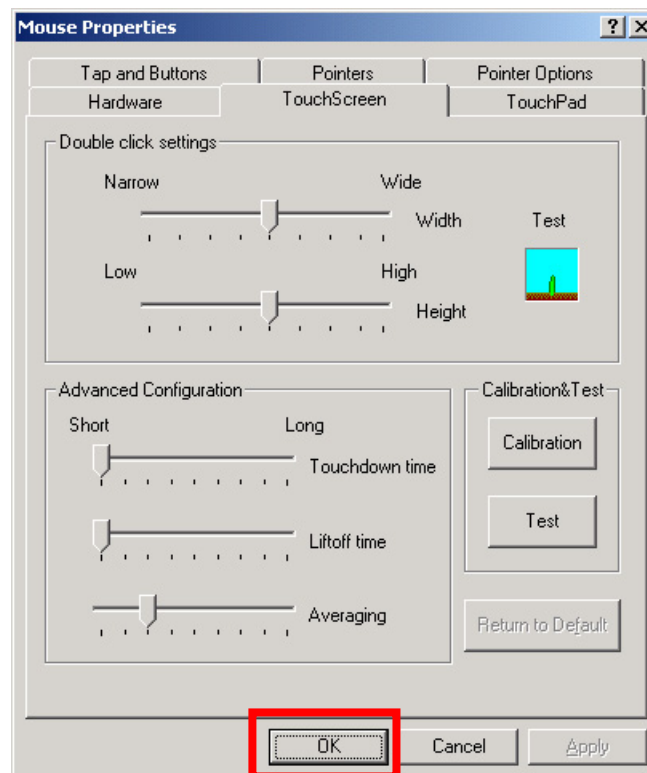


Figure 4. Calibration Complete



GDS and Peripherals Limited Warranty



Providing that this product has been installed and used as instructed in the operation manual, Global Information Technology (referred to as "GIT") will repair VCI and/or VMI module (main body other than software, which is covered by a separate warranty) with new or rebuilt parts, free of charge for three (3) years from the date of original purchase in the event of a defect in materials or workmanship. This warranty excludes all other options and accessories which are covered for a period of one (1) year from the date of original purchase.

This warranty is extended solely to the original purchaser. A purchase receipt or other proof of evidencing the date of original purchase will be required before warranty service is provided.

This warranty only covers failures due to defects in materials or workmanship which may occur during normal use. It does not cover damage which occurs in shipment or failures which may be caused by products not supplied by GIT, or failures resulting from alteration, accident, misuse, introduction of liquid material or other foreign matter into the product, abuse, neglect, installation, maladjustment of consumer controls, improper maintenance, modification or service by anyone other than GIT, or damage to be attributable to acts of God.

GIT SHALL NOT BE LIABLE FOR LOSS OF DATA OR OTHER INCIDENTAL OR CONSEQUENTIAL DAMAGES RESULTING FROM THE USE OF THIS PRODUCT, OR ARISING OUT OF ANY BREACH OF THIS WARRANTY. ALL EXPRESS AND IMPLIED WARRANTIES, INCLUDING THE WARRANTIES OF MERCHANTABILITY AND FITNESS FOR A PARTICULAR PURPOSE ARE LIMITED TO THE APPLICABLE WARRANTY PERIOD SET FORTH ABOVE.

GIT's entire liability, and your exclusive remedy under this warranty shall be limited to the replacement, of any defective parts or functions in the product which is returned to GIT's Service Center, together with a copy of the purchase receipt, during the aforementioned warranty period. Anything in the foregoing to the contrary notwithstanding, GIT shall have no obligation for any defects in the product resulting from your storage thereof, or for defects that have been caused by operation of the product other than on the operation manual or in environmental conditions other than those specified by GIT or by alteration, accident, misuse, abuse, neglect, mishandling, misapplication, installation, maladjustment of consumer controls, improper maintenance, modification of damage that is attributable to acts of God.

This limited warranty gives you specific legal rights, and you may also have other rights, which vary from country to country. This Limited Warranty will be governed by the laws of Republic Korea, without regard to its conflict-of-laws rules.

To obtain help or technical Assistance, please contact your product supplier or distributor.